



Income Producing Property For Sale

Location

Main Street Car Wash
1402 Main Street
Lewisville TX

Space

2,500 sq/ft Lube & Tune Center with
four bays

+/- 3, 880 sq/ft Full Service "Flex"
Car Wash (Separate Building)

Located on 45,000 sq/ft of paved
land (150' X 300")

Gross Income

+/- \$1,000,000.00/year

Price

\$2,500,000.00

Contact

Todd Weaver
3505 Yucca Drive, Suite 100
Flower Mound, Texas 75028

todd@weavercommercial.com
469-635-2833 Office
469-635-2849 Fax

WEAVER
COMMERCIAL REAL ESTATE

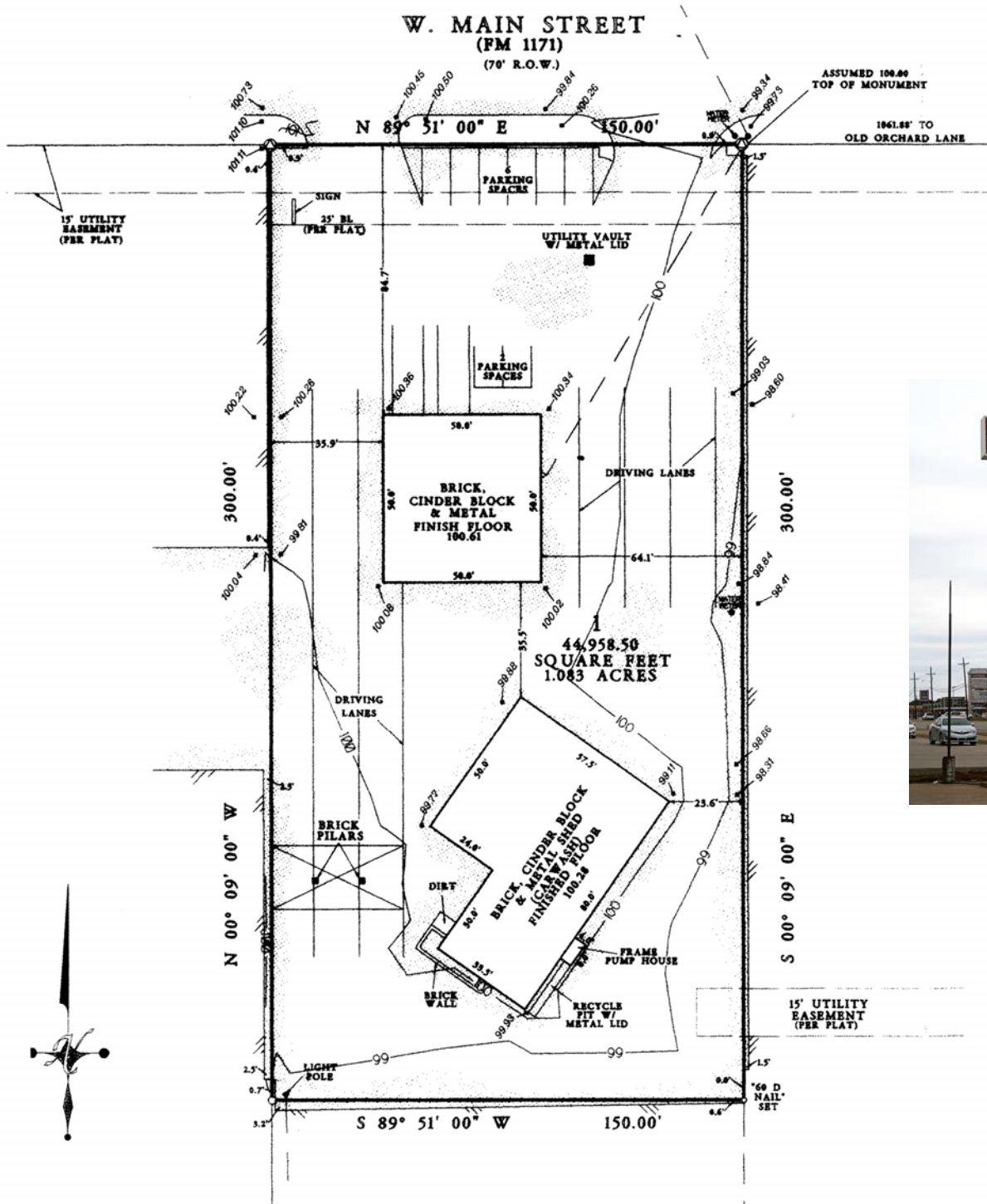


For Sale





For Sale



WEAVER
COMMERCIAL REAL ESTATE

This information is believed to be accurate, but no representation or warranty, express or implied, as to its accuracy or completeness is made by Weaver Commercial Real Estate, Ltd. and/or its agents or any party. The presentation of this property is submitted subject to errors, omissions, change of price and prior sale or lease, or withdrawal from market without notice.