



For Sale

Location

824 Office Park Circle

Legal Address
Lot's 11 & 12, Block C,
Hillside Office Park Addition to the
City of Lewisville, 75077
Denton County Texas.

Building

9,940 Sq. Ft. of Office Warehouse
built in 1997

Price

\$844,900.00 (\$85.00 per sq/ft)

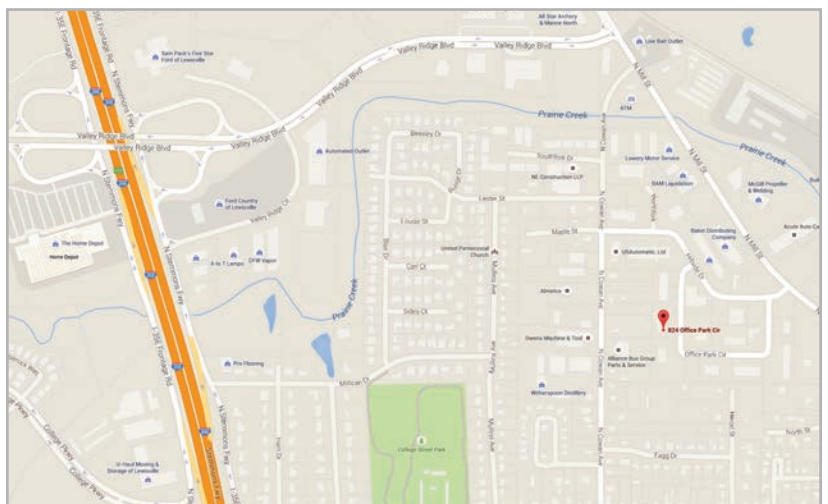
Features

- Tilt Wall Construction
- 5 roll up dock doors
- Zoned Light Industrial
- Office to Warehouse ratio
30 / 70%
- Tenant Occupies +/- 70 % of the
building
- Parking 1/765 sq/ft (13 including
handicapped)

Contact

Todd Weaver
3505 Yucca Drive, Suite 100
Flower Mound, Texas 75028

todd@weavercommercial.com
469-635-2833 Office
469-635-2849 Fax



WEAVER

COMMERCIAL REAL ESTATE