



> Raw Land For Sale

Location

Southwest Corner of Simmons & FM 407 in Double Oak TX

Land

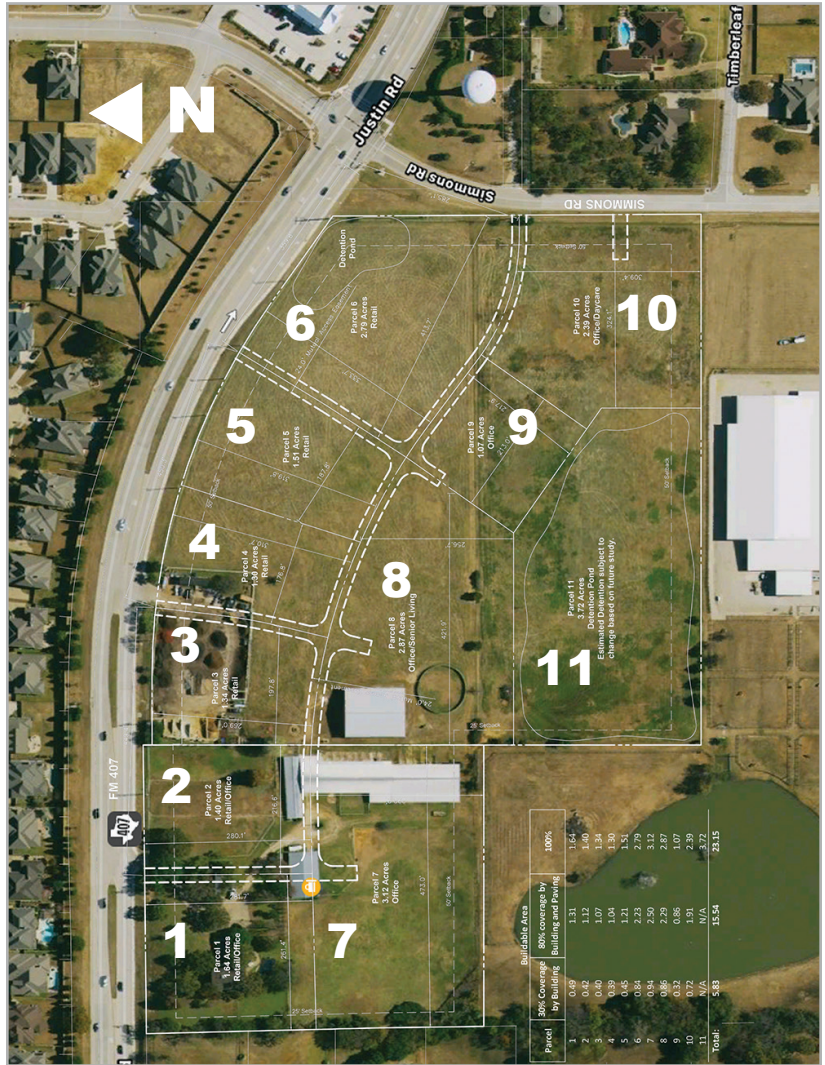
+/- 23.15 acres

Price

\$8,084,517.00 Contact agent for price breakdown

Features

- Multiple curb cuts for excellent access
- A concept plan exists on the subject property
- Double Oak is open to 1 house per acre Residential Zoning.



Contact

Todd Weaver
 todd@weavercommercial.com
 469-635-2833 Office
 469-203-8552 Fax

Buildable Area			
Parcel	30% Covered by Building	80% Covered by Building and Paving	100%
1	0.49	1.31	1.64
2	0.42	1.12	1.40
3	0.40	1.07	1.34
4	0.39	1.04	1.30
5	0.45	1.21	1.51
6	0.84	2.23	2.79
7	0.94	2.50	3.12
8	0.86	2.29	2.87
9	0.32	0.86	1.07
10	0.72	1.91	2.39
11	N/A	N/A	3.72
TOTAL	5.83	15.54	23.15



This information is believed to be accurate, but no representation or warranty, express or implied, as to its accuracy or completeness is made by Weaver Commercial Real Estate, Ltd. and/or its agents or any party. The presentation of this property is submitted subject to errors, omissions, change of price and prior sale or lease, or withdrawal from market without notice.