



**For Sale**

### Location

Eads & FM 1171  
Flower Mound, TX  
75028

### Land Area

2.5512 Acres or 111,130 Sq/Ft

### Sales Price

\$2,389,300.00

### Features

- Excellent "Direct Access" off of FM 1171 (Cross Timbers Rd.)
- Utilities to the site
- Zoned Retail-2
- Seller is updating the Zoning and is also Platting
- Great for Medical, Casual Dining

### Contact

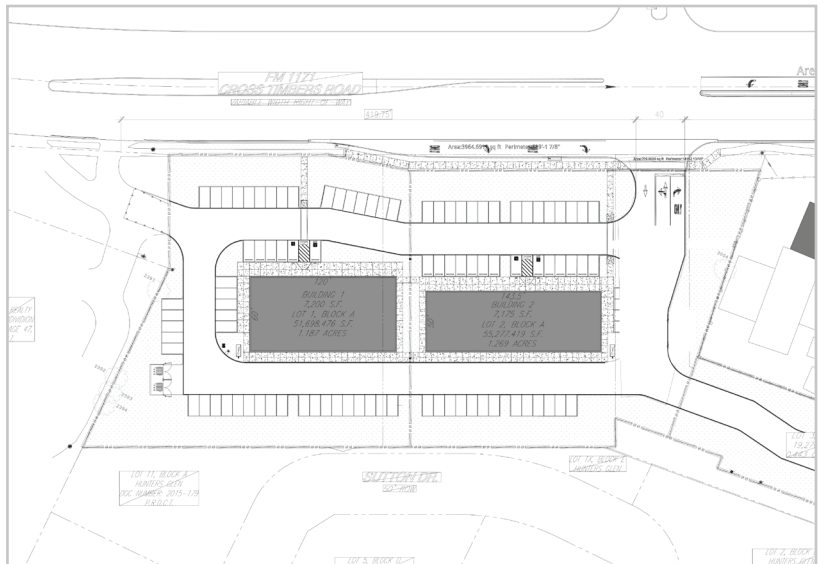
todd@weavercommercial.com  
469-635-2833 Office  
469-203-8552 Fax



This information is believed to be accurate, but no representation or warranty, express or implied, as to its accuracy or completeness is made by Weaver Commercial Real Estate, Ltd. and/or its agents or any party. The presentation of this property is submitted subject to errors, omissions, change of price and prior sale or lease, or withdrawal from market without notice.



**For Sale**



## Contact

todd@weavercommercial.com  
469-635-2833 Office  
469-635-2849 Fax

**WEAVER**  
COMMERCIAL REAL ESTATE

This information is believed to be accurate, but no representation or warranty, express or implied, as to its accuracy or completeness is made by Weaver Commercial Real Estate, Ltd. and/or its agents or any party. The presentation of this property is submitted subject to errors, omissions, change of price and prior sale or lease, or withdrawal from market without notice.