



For Sale

Location

1550 N Stemmons Frwy
Lewisville, TX
75077

Net Space

- 1.544 Acres
- Class C Mortuary Building with 12,441 SF Building Area

Price

\$2,000,000.00

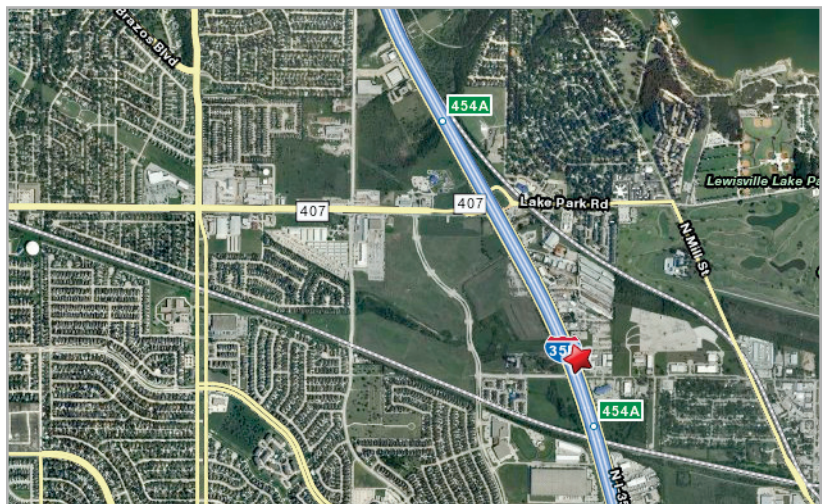
Features

- I-35 Frontage, great signage, great access, and building can suit any use!
- Zoned General Business
- Located about 20 miles northwest of Dallas via I-35E (Stemmons Frwy)

Contact

Todd Weaver
3505 Yucca Drive, Suite 100
Flower Mound, Texas 75028

todd@weavercommercial.com
469-635-2833 Office
469-635-2849 Fax



This information is believed to be accurate, but no representation or warranty, express or implied, as to its accuracy or completeness is made by Weaver Commercial Real Estate, Ltd. and/or its agents or any party. The presentation of this property is submitted subject to errors, omissions, change of price and prior sale or lease, or withdrawal from market without notice.